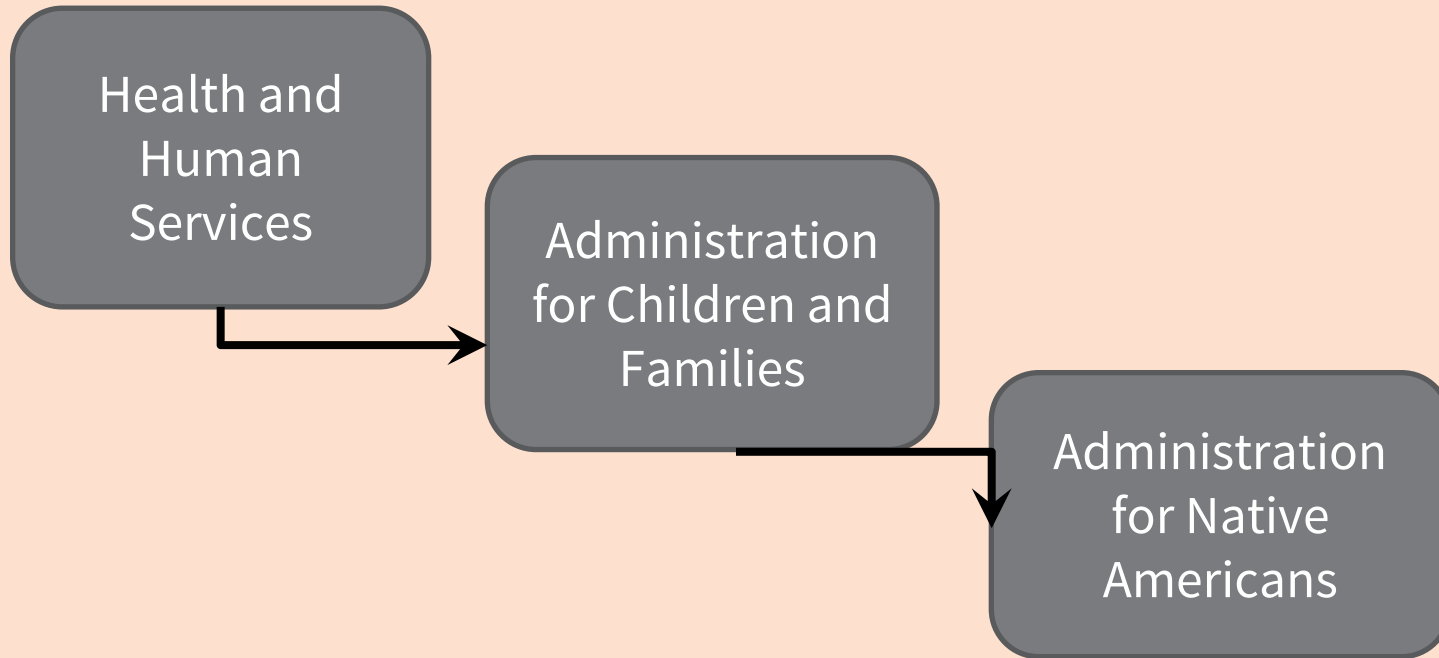


# EVALUATION 101: INTRODUCING EVALUATION

Presented by: Amy Sagalkin, PMP, Director,  
Program Evaluation and Planning with the  
Administration for Native Americans

Amelia Popham, MSW, Social Science Research  
Analyst with the Office of Planning, Research and  
Evaluation

# THE ADMINISTRATION FOR NATIVE AMERICANS



# NATIVE LANGUAGE PRESERVATION

- **Native Language Preservation and Maintenance**
- **Esther Martinez Immersion**
- **[www.acf.hhs.gov/programs/ana](http://www.acf.hhs.gov/programs/ana)**



# WHAT ABOUT YOU?



What's your comfort level with evaluation?

- 1) Evaluation is new to you, and you're starting at the beginning
- 2) You know something about evaluation, but you're always looking to learn more
- 3) You feel confident about your evaluation knowledge

# WHAT IS EVALUATION?

**The goal of any ‘evaluation’ is to determine the value of something.**

**Grant evaluations might include:**

- **Developing an assessment plan to measure progress towards grant objectives**
- **Collecting and reviewing data to keep a grant on track and demonstrate the achievement of goals**
- **Sometimes, grant evaluations can also demonstrate whether the grant is having expected effects and impacts.**

# WHY IS EVALUATION IMPORTANT?

- **Helps you make decisions to better serve your population**
- **Helps you demonstrate the worth of your program to the public**
- **Helps you be more efficient with limited funds by investing in what works**



# WHAT “ISN’T” EVALUATION?

## **Common Perception: Evaluation is only done by experts**

- **FACT:** There are many different kinds of evaluation..

## **Common Perception: Evaluation is when someone from outside my community comes in to judge me**

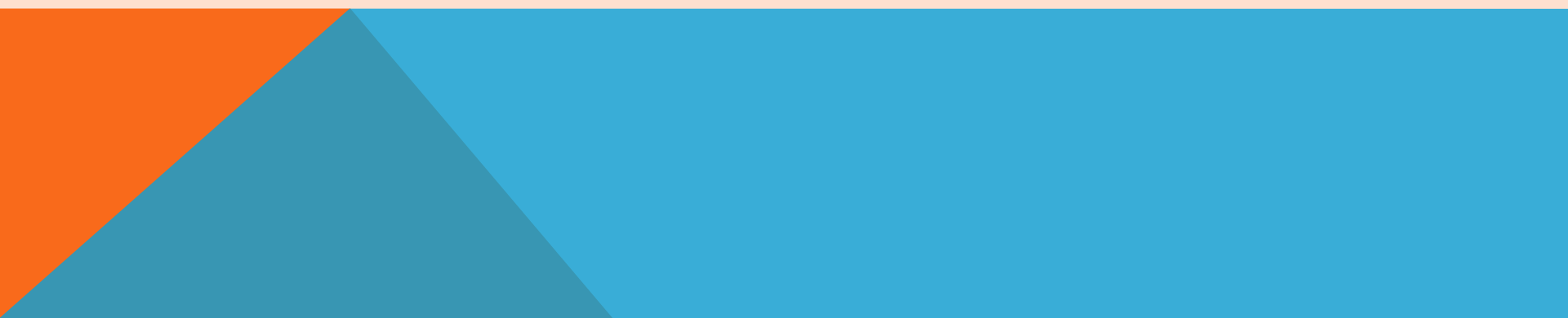
- **FACT:** Many Tribes partner with evaluators they know and trust

## **Common Perception: Evaluation is something to fear**

- **FACT:** Evaluation can be ongoing, so results can guide necessary changes to your project.

## **Common Perception: Evaluation is expensive, so it’s not worth doing**

- **FACT:** Low-cost, basic level evaluations are available. Evaluation also helps you save money.



# DEFINING COMMON TERMS

## **Inputs**

Resources needed to conduct project activities. Ex) staff, curricula

## **Activities**

The actions and services that are part of program implementation. Ex) deliver language classes

## **Outputs**

A target number for activities completed. Outputs are the direct results of program activities. Ex) 14 language classes delivered

## **Outcomes**

The final intended result of an activity, which is usually changes in program participants' behavior, knowledge, skills, status and/or level of functioning. Ex) 15 students increase speaking ability





GAMES

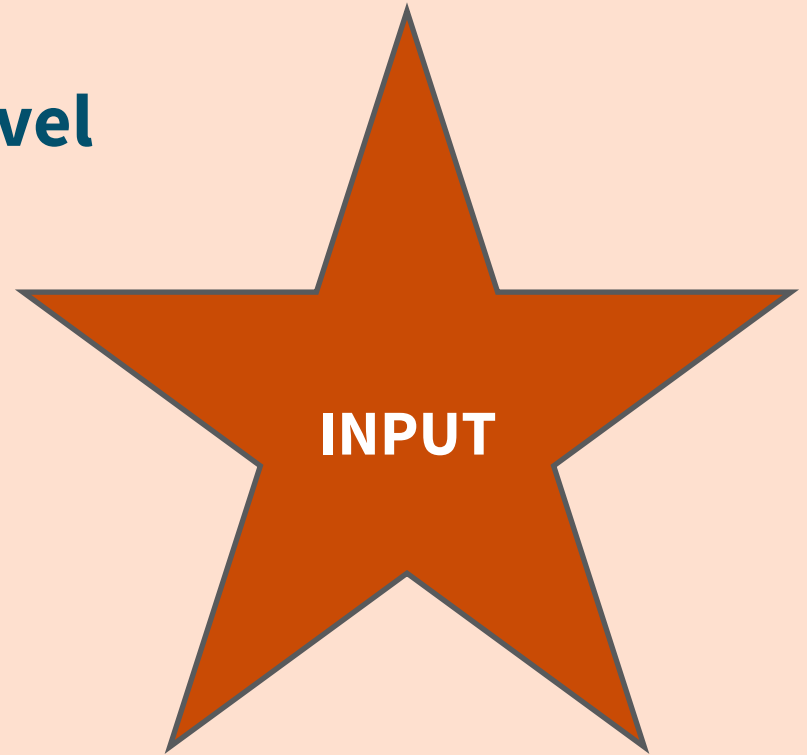
**ANA language project to  
increase speaking ability of  
children enrolled in the  
Tribal elementary school**

# EXERCISES: WHAT AM I?

## Teachers for each grade level

### What am I?

- Input?
- Activity?
- Output?
- Outcome?

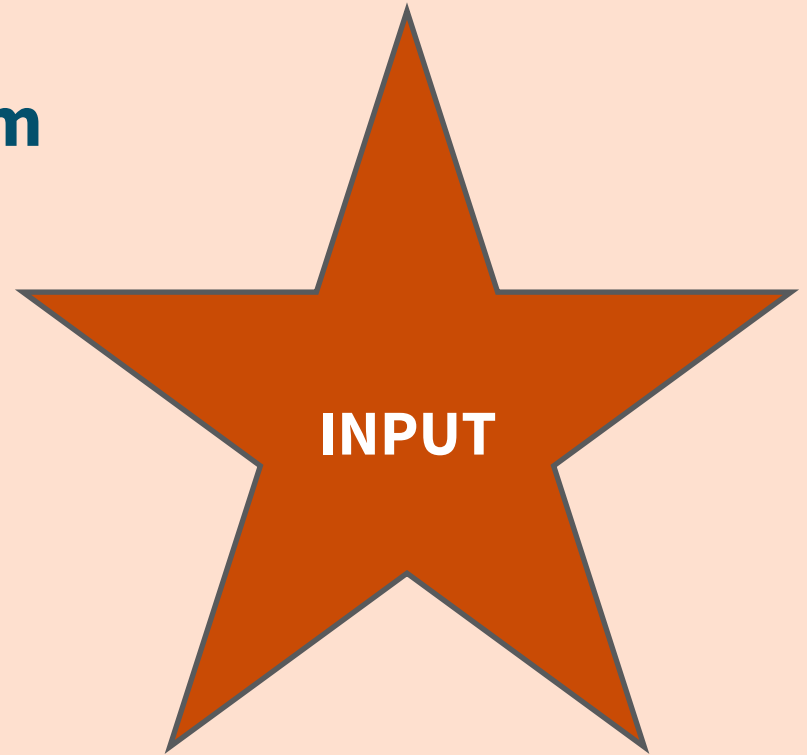


# EXERCISES: WHAT AM I?

## Native language curriculum

### What am I?

- Input?
- Activity?
- Output?
- Outcome?



# EXERCISES: WHAT AM I?

## Provide instruction to children

### What am I?

- Input?
- Activity?
- Output?
- Outcome?

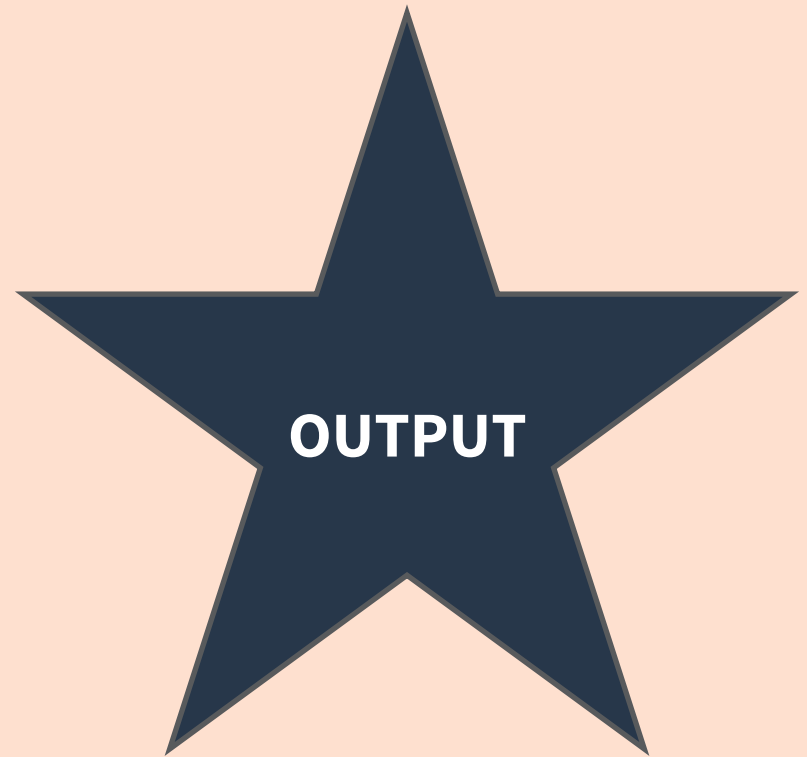


# EXERCISES: WHAT AM I?

**500 hours of instruction in  
the language provided**

## **What am I?**

- Input?
- Activity?
- Output?
- Outcome?



# EXERCISES: WHAT AM I?

**20 children advance their language proficiency level by at least one level**

## **What am I?**

- Input?
- Activity?
- Output?
- Outcome?



# EXERCISES: WHAT AM I?

**Visiting Elders tell stories to children in the language**

**Conduct assessments of teacher's knowledge in teaching methods at the beginning and end of the year.**

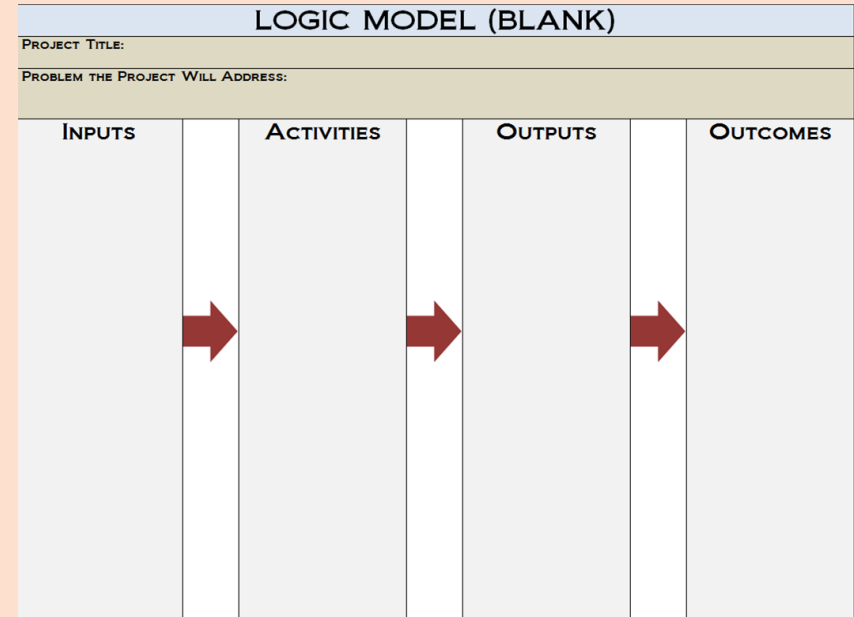
## **What am I?**

- Input?
- Activity?
- Output?
- Outcome?



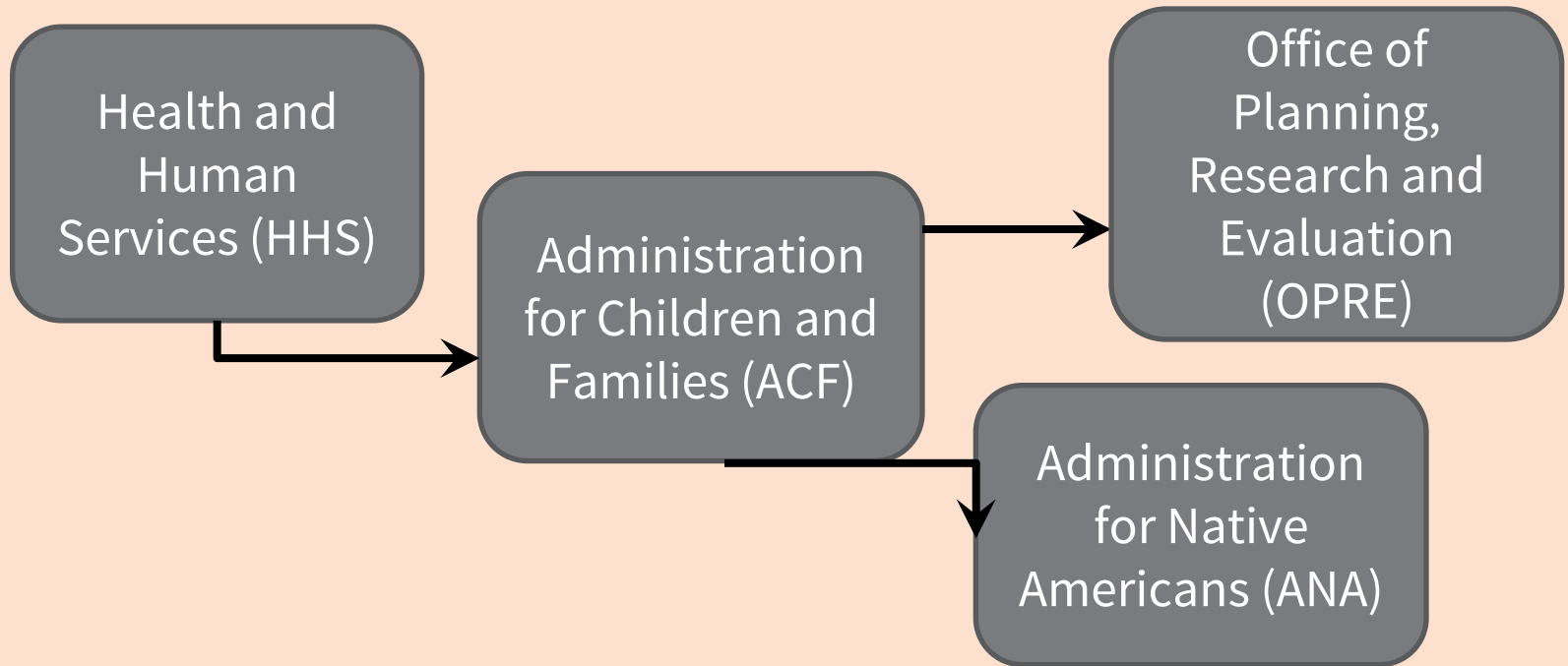
# INTRODUCTION TO LOGIC MODEL

- A logic model establishes the connections between all elements of your project
- Without a logic model, you risk wasting time and resources
- A logic model is a VISUAL way to see logic





# THE OFFICE OF PLANNING, RESEARCH AND EVALUATION



# EVALUATION IN TRIBAL COMMUNITIES

History of negative  
evaluation  
experiences in  
Tribal  
communities

**VS**

Current  
momentum  
toward evidenced  
based practices

# COLLABORATIVE RESEARCH AND EVALUATION IN TRIBAL COMMUNITIES



*Video:*

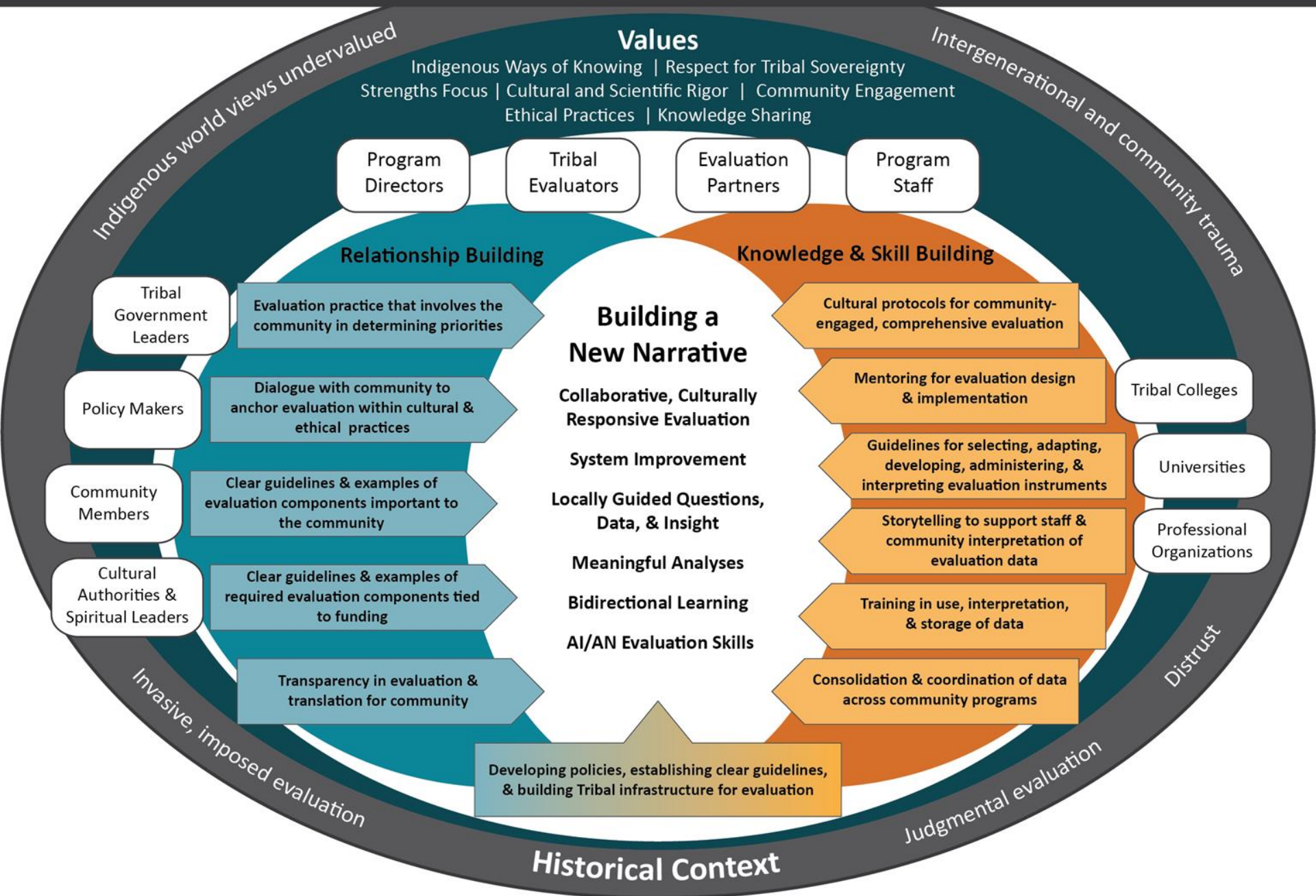
<http://www.acf.hhs.gov/programs/cb/capacity/program-evaluation/virtual-summit/tribal-communities>

*Roadmap:*

[http://www.acf.hhs.gov/sites/default/files/cb/tribal\\_roadmap.pdf](http://www.acf.hhs.gov/sites/default/files/cb/tribal_roadmap.pdf)

OPRE

# CO-CREATING COLLABORATIVE & EFFECTIVE EVALUATION TO IMPROVE TRIBAL CHILD WELFARE PROGRAMS



# IMPACTS OF CAPACITY BUILDING

Tribal communities are better prepared to oversee and conduct evaluation and consume evaluation information

Improved services and outcomes through the integration of data into decision making

Communities are invested in and take ownership of their evaluation plans and performance measurement data collection



**Confederated Salish and Kootenai Tribes**

# BOTTOM LINE

HAVE HIGH EXPECTATIONS FOR YOUR EVALUATOR AS A TEAM MEMBER WHO HELPS BUILD THE CAPACITY OF YOUR COMMUNITY TO UNDERSTAND AND DO YOUR OWN EVALUATIONS, FOR YOUR OWN GOALS AND PURPOSES.



# CONTACT INFORMATION

Amy Sagalkin, Administration for Native Americans  
Administration for Children and Families, HHS  
[Amy.Sagalkin@acf.hhs.gov](mailto:Amy.Sagalkin@acf.hhs.gov)

Amelia Popham, Office of Planning, Research, and Evaluation  
Administration for Children and Families, HHS  
[Amelia.Popham@acf.hhs.gov](mailto:Amelia.Popham@acf.hhs.gov)

# Thank you!

